

MEMORANDUM

Datgel Pty Ltd
Suite 8, Level 1, The Hub
89 - 97 Jones St, Ultimo NSW 2007 Australia

Tel: +61 2 8202 8600
Fax: +61 2 8202 8606
Email: support@datgel.com

| | | | |
|--------------|-------------------------------|----------------|-----------------|
| To: | gINT Users | Date: | 24 January 2011 |
| From: | Phil Wade | Job No: | |
| Copy: | | Doc No: | |
| RE: | Running gINT 8.2 on Windows 7 | | |

1 Introduction

Steps 3 to 4 should be taken after installing gINT on Windows 7.

Step 4 should be done after installing each gINT update.

If you have installed the SELECT version of gINT, then skip to step 3.

2 Installing Non-SELECT Version of gINT

Follow these instructions if you are installing the Single-User or Network USB Hardware Key license or the old Single-User Software Key License edition of gINT.

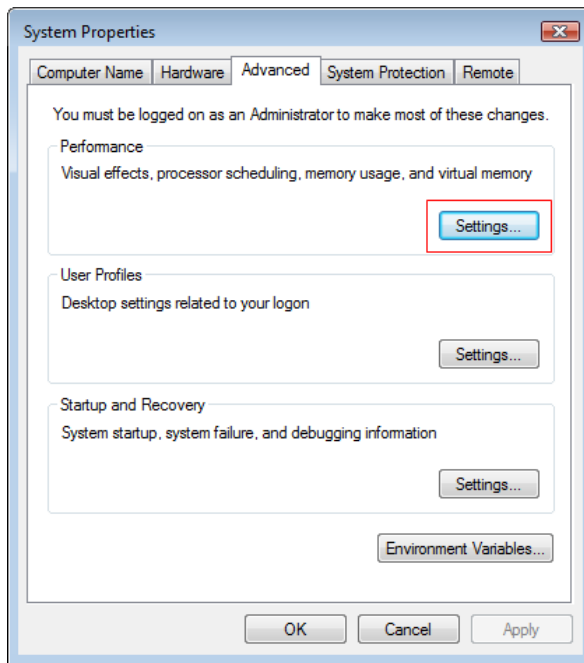
- a) Download and install the gINT installation package from <http://www.gintsoftware.com/downloads/updates/gint8install.zip> .
- b) Download and install the latest gINT update from http://www.gintsoftware.com/support_updates_v8.html .
- c) If you are using a USB Hardware Key, and you are running Windows 7 64-bit, download and install the USB Hardware Key driver from <http://www2.safenet-inc.com/support/files/SentinelProtectionInstaller7.6.1.zip> .
- d) Set the DEP Exception and Folder Permissions as explained in Step 3 and 4.

3 Windows Data Execution Prevention (DEP)

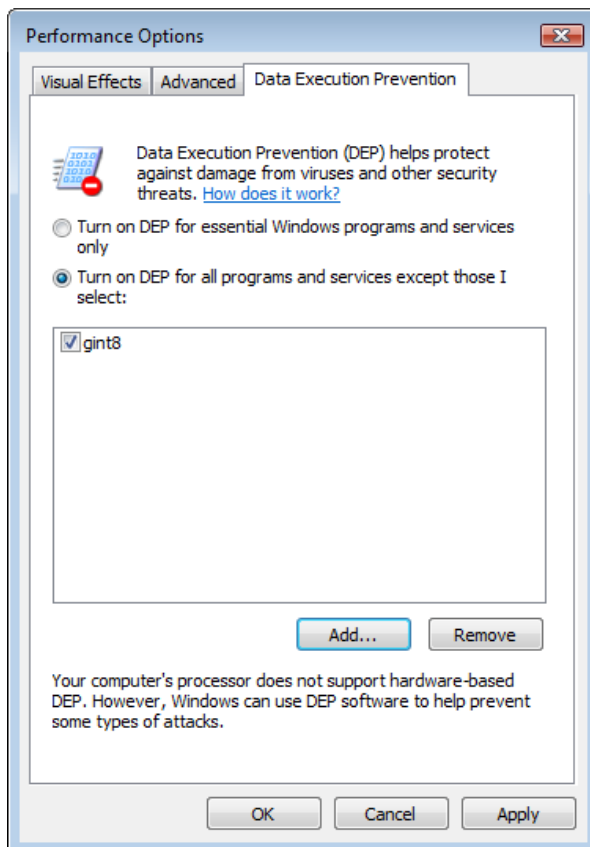
When using gINT on a Windows 7, Windows Server 2008, Windows Vista or Windows Server 2003 system, you may encounter access problems when opening gINT related to the DEP (Data Execution Prevention) Settings.

To create a DEP exception for gINT, follow the steps below (slight variations exist for different operating systems):

- a) Open Control Panel > System
- b) Select Advanced **System Settings** tab and click on **Settings** in the *Performance* section.



- c) In the **Performance Options** dialog, select the **Data Execution Prevention** tab.
- d) If the option to “Turn on DEP for all programs and services...” is checked, then click **Add** and browse to the gINT8.exe file. The default location for this file is
C:\Program Files\gINT\bin\gint8.exe
or
C:\Program Files\Bentley\gINT\bin\gint8.exe.



- e) Click **Apply** to save the changes.

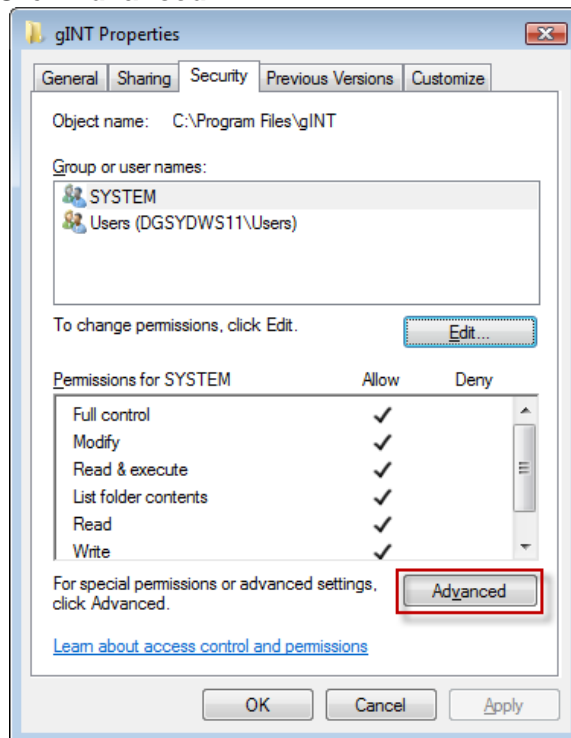
4 Give Everyone Full Control to gINT folders and sub folders

Without this step your user setting may not be saved

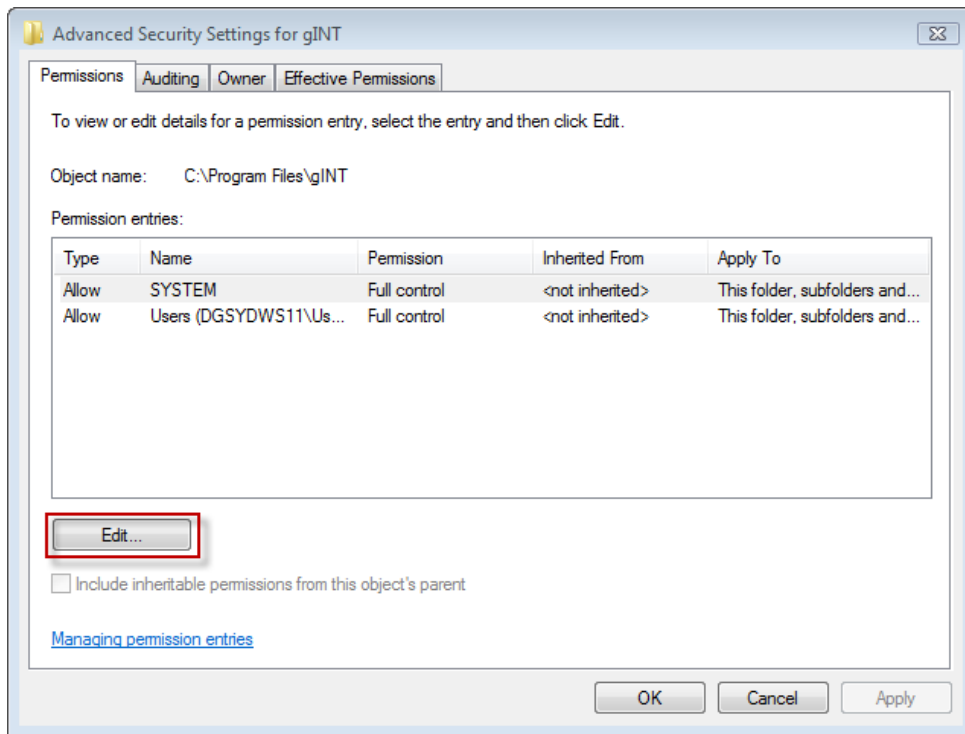
- C:\Program Files\gINT
or
C:\Program Files\Bentley\gINT
- C:\Program Files\Common Files\gINT Software

Procedure:

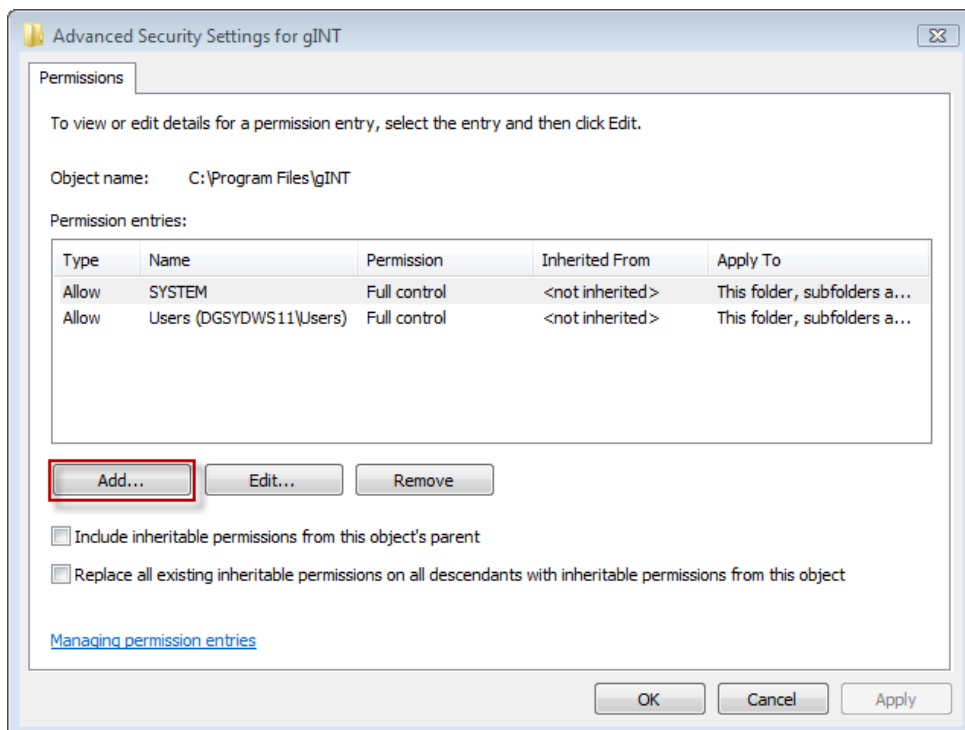
- a) Browse to folder in windows explorer, right click on folder, select Properties, then move to the Security tab.
- b) Click **Advanced**



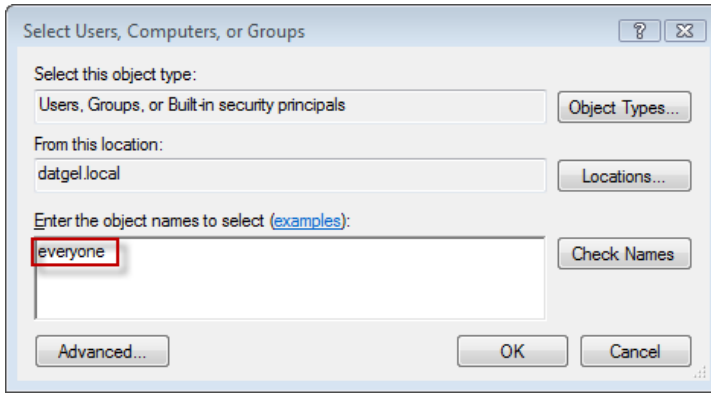
- c) Click **Edit...**



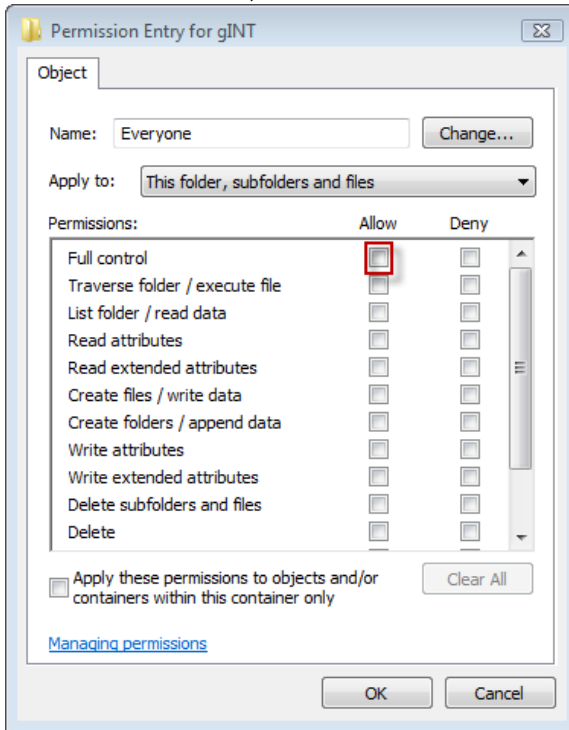
d) Click **Add...**



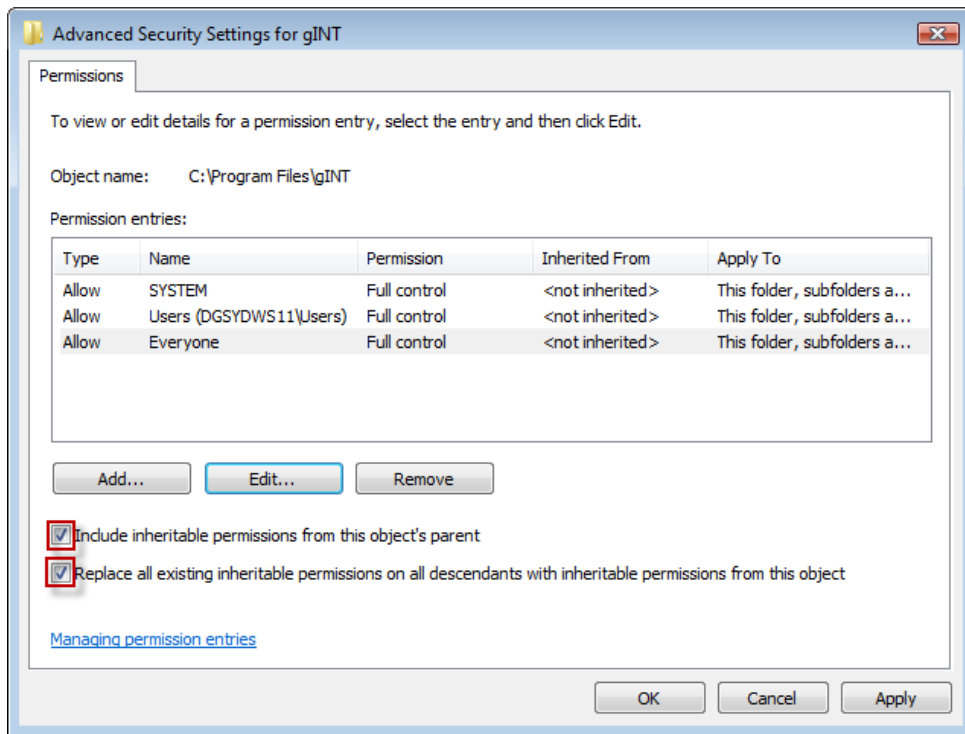
e) Type *everyone*, click **Check Names**, and click **OK**



f) You should see this, and click *Full control* in the *Allow* column, then click **OK**



g) Check the indicated boxed, then click **Apply**, and then **OK**



h) Click **OK** on the other forms left open.

5 Run gINT once as Administrator

This should be done after installing each gINT update. Without this step you may experience an error message stating: Error, Unexpected error; quitting

The first time after installing gINT or a gINT update Right click on the gINT desktop short cut and chose **Run as administrator**

The Next time you run gINT, simply double click on the gINT icon and run gINT as a normal user.